

CANTITATI COLECTATE ZONA 1 LEHLIU GARA (TONE)

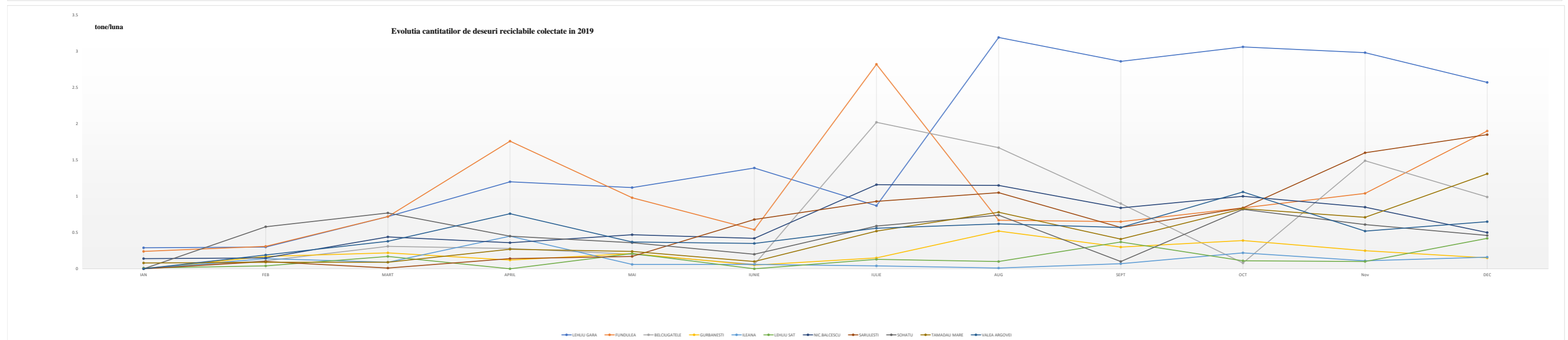
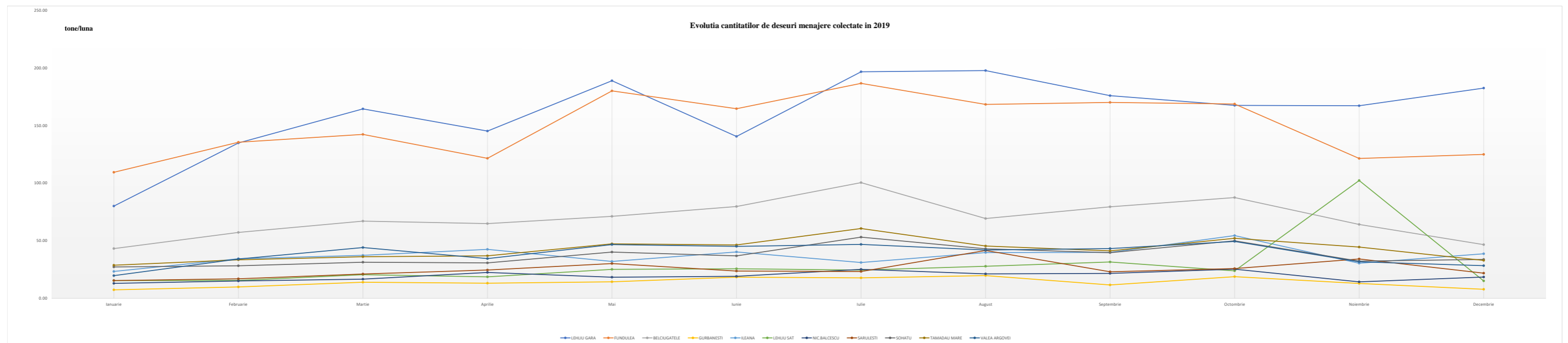
ANEXA 2

LOCALITATE	POPULATIE UAT	Cant.med Contract	Ianuarie 2019			Februarie 2019			Martie 2019			Aprilie 2019			Mai 2019			Iunie 2019			Iulie 2019			August 2019			Septembrie 2019			Octombrie 2019			Noiembrie 2019			Decembrie 2019			TOTAL 2019			MEDIE LUNARA	Cant gen. pe zi/pers
			AE/IP	POP	REC	AE/IP	POP	REC	AE/IP	POP	REC	AE/IP	POP	REC	AE/IP	POP	REC	AE/IP	POP	REC	AE/IP	POP	REC	AE/IP	POP	REC	AE/IP	POP	REC	AE/IP	POP	REC	AE/IP	POP	REC	AE/IP	POP	REC					
LEHLIU GARA	6258	142.01	21.94	80.07	0.29	21.73	134.87	0.30	26.34	164.44	0.72	22.47	145.21	1.20	25.52	188.89	1.12	22.30	140.50	1.39	33.29	196.65	2.82	26.84	197.72	3.19	29.05	175.95	2.86	28.94	167.52	3.06	25.87	167.19	2.98	23.20	182.48	2.57	307.49	1941.49	22.50	161.79	0.85
FUNDULEA	4640	105.29	7.17	109.41	0.24	6.93	135.49	0.31	6.30	142.30	0.72	6.78	121.52	1.76	8.45	180.11	0.98	5.68	164.60	0.54	8.81	186.63	0.87	7.47	168.35	0.67	9.56	170.08	0.65	8.25	168.69	0.84	7.57	121.45	1.04	7.33	124.92	1.9	90.30	1793.55	10.52	149.46	1.06
TOTAL URBAN	10898	247.30	29.11	189.48	0.53	28.66	270.36	0.61	32.64	306.74	1.44	29.25	266.73	2.96	33.97	369.00	2.10	27.98	305.10	1.93	42.10	383.28	3.69	34.31	366.07	3.86	38.61	346.03	3.51	37.19	336.21	3.90	33.44	288.64	4.02	30.53	307.40	4.47	397.79	3735.04	33.02	311.25	0.94
BELCIUGATELE	2061	23.45	9.86	43.16	0.01	7.91	57.21	0.11	5.94	66.99	0.31	6.28	64.86	0.28	8.90	71.16	0.20	6.23	79.73	0.06	9.52	100.44	2.02	8.20	69.27	1.67	9.40	79.46	0.90	10.71	87.45	0.08	7.22	64.11	1.49	7.15	46.57	0.99	97.32	830.41	8.12	69.20	1.10
GURBANESTI	1318	14.99	0.76	7.36	0.00	0.49	9.87	0.17	0.41	13.93	0.22	1.50	13.11	0.12	1.30	14.30	0.21	0.68	18.38	0.05	1.01	17.73	0.15	1.00	19.72	0.52	0.92	11.60	0.30	1.11	18.79	0.39	1.15	12.89	0.25	0.69	7.81	0.15	11.02	165.49	2.53	13.79	0.34
ILEANA	3113	35.42	2.80	23.32	0.00	2.21	34.39	0.14	2.53	37.30	0.09	1.94	42.48	0.45	2.30	32.01	0.06	1.58	40.23	0.06	2.45	31.07	0.04	1.51	39.73	0.01	2.16	39.87	0.07	2.81	54.45	0.22	3.14	30.44	0.11	2.36	38.67	0.16	27.79	443.96	1.41	37.00	0.39
LEHLIU SAT	2752	31.31	2.33	15.35	0.01	2.82	15.53	0.04	2.86	20.50	0.17	2.97	18.63	0.00	1.56	25.12	0.21	3.39	25.66	0.00	3.46	24.52	0.13	3.07	27.83	0.10	3.83	31.55	0.37	3.70	23.82	0.11	3.03	27.05	0.10	4.03	15.09	0.42	37.05	270.65	1.66	22.55	0.27
NIC.BALCESCU	1370	15.59	0.41	12.97	0.14	0.32	15.03	0.15	0.30	16.61	0.44	0.39	22.45	0.36	0.77	18.29	0.47	1.10	19.09	0.42	0.45	25.15	1.16	0.14	21.22	1.15	0.98	21.60	0.84	1.26	25.30	1.00	0.68	14.28	0.85	0.38	18.46	0.50	7.18	230.45	7.48	19.20	0.46
SARULESTI	2293	26.09	0.31	15.41	0.00	0.53	16.96	0.10	0.87	21.07	0.01	1.15	24.55	0.14	2.13	30.19	0.17	1.42	23.65	0.68	1.54	23.26	0.93	1.81	41.51	1.05	1.56	23.02	0.57	1.34	25.80	0.84	1.48	34.18	1.60	0.77	21.83	1.85	14.91	301.43	7.94	25.12	0.36
SOHATU	2877	32.73	0.58	27.24	0.00	0.42	28.23	0.58	0.54	31.30	0.77	0.66	30.74	0.45	0.70	40.14	0.36	0.59	36.85	0.20	0.73	53.09	0.59	0.58	42.96	0.74	0.75	39.60	0.10	1.14	49.91	0.82	0.76	32.27	0.61	1.02	33.76	0.46	8.47	446.09	5.68	37.17	0.42
TAMADAU MARE	2354	26.78	0.94	28.72	0.08	0.73	33.43	0.09	0.78	36.10	0.09	0.73	36.89	0.27	0.96	47.26	0.24	0.97	46.31	0.10	1.48	60.60	0.52	0.85	45.41	0.78	1.25	41.21	0.41	1.72	52.12	0.83	1.18	44.48	0.71	0.95	32.89	1.31	12.54	505.42	5.43	42.12	0.59
VALEA ARGOVEI	2151	24.47	0.34	19.68	0.00	0.38	34.08	0.19	0.91	44.05	0.38	2.14	34.48	0.76	2.57	46.67	0.37	0.73	45.09	0.35	1.22	46.82	0.56	0.97	41.91	0.62	1.14	43.18	0.57	1.36	49.36	1.06	1.45	31.69	0.52	1.15	28.33	0.65	14.36	465.34	6.03	38.78	0.59
TOTAL RURAL	20289	230.82	18.33	193.21	0.24	15.81	244.73	1.57	15.14	287.85	2.48	17.76	288.19	2.83	21.19	325.14	2.29	16.69	334.99	1.92	21.86	382.68	6.10	18.13	349.56	6.64	21.99	331.09	4.13	25.15	387.00	5.35	20.09	291.39	6.24	18.50	243.41	6.49	230.64	3659.24	46.28	304.94	0.49
TOTAL ZONA 1	31187	478.12	47.44	382.69	0.77	44.47	515.09	2.18	47.78	594.59	3.92	47.01	554.92	5.79	55.16	694.14	4.39	44.67	640.09	3.85	63.96	765.96	9.79	52.44	715.63	10.50	60.60	677.12	7.64	62.34	723.21	9.25	53.53	580.03	10.26	49.03	550.81	10.96	628.43	7394.28	79.30	616.19	0.65

RECICLABIL	IAN 2019		FEBR 2019		MAR 2019		APR 2019		MAI 2019		IUNIE 2019		IULIE 2019		AUGUST 2019		SEPT 2019		OCT 2019		NOV 2019		DEC 2019		TOTAL	
	AE/IP	POP	AE/IP	POP	AE/IP	POP	AE/IP	POP	AE/IP	POP	AE/IP	POP	AE/IP	POP	AE/IP	POP	AE/IP	POP	AE/IP	POP	AE/IP	POP	AE/IP	POP	AE/IP	POP
	0.12	0.77	0.054	2.18	0.24	3.92	0.75	5.79	1.53	4.39	0.59	3.85	1.7	10.5	0.94	7.64	3.23	9.25	0.46	10.26	0.5	10.96	12.04	79.30		

Cantitatea medie generata (kg/zi)	Urban	Rural	Zona
		0.94	0.49

LUNA	IAN	FEB	MART	APRIL	MAI	IUNIE	IULIE	AUG	SEPT.	OCT	NOV	DEC	TOTAL
BIODEGRADABIL	0.00	0.00	2.46	0.64	2.76	2.26	3.40	2.18	2.50	5.70	7.20	0.00	29.10



CANTITATI COLECTATE ZONA 2 OLTENITA (TONE)

LOCALITATE	POPULATIE UAT	Cant.med Contract	Ianuarie 2019			Februarie 2019			Martie 2019			Aprilie 2019			Mai 2019			Iunie 2019			Iulie 2019			August 2019			Septembrie 2019			Octombrie 2019			Noiembrie 2019			Decembrie 2019			TOTAL 2019			MEDIE LUNARA	Cant gen. pe zi/pers
			AE/IP	POP	REC	AE/IP	POP	REC	AE/IP	POP	REC	AE/IP	POP	REC	AE/IP	POP	REC	AE/IP	POP	REC	AE/IP	POP	REC	AE/IP	POP	REC	AE/IP	POP	REC	AE/IP	POP	REC	AE/IP	POP	REC	AE/IP	POP	REC					
Oltenta	26373	537.32	90.08	366.68	3.14	125.58	299.52	16.58	133.96	624.78	20.36	120.28	603.00	30.26	136.84	668.22	38.42	111.28	705.64	62.43	135.82	880.24	79.44	107.16	801.74	76.62	125.78	670.52	52.68	131.48	693.32	49.34	120.16	637.84	40.02	110.42	540.54	37.42	1448.84	7492.04	506.71	624.34	0.78
Budesti	7118	145.02	7.26	97.60	0.86	9.22	126.80	0.68	6.20	167.64	1.22	5.62	157.42	1.16	5.78	195.54	1.46	4.38	182.78	0.62	4.42	214.86	0.60	4.66	210.02	0.36	3.74	175.16	0.94	12.64	693.32	49.34	120.16	637.84	40.02	110.42	540.54	37.42	1448.84	7492.04	506.71	624.34	0.78
TOTAL URBAN	33491	682.35	97.34	464.28	4.00	134.80	426.32	17.26	140.16	792.42	21.58	125.90	760.42	31.42	142.62	863.76	39.88	115.66	888.42	63.05	140.24	1095.10	80.04	111.82	1011.76	76.98	129.52	845.68	53.62	144.12	904.10	50.70	129.70	815.89	40.56	119.26	654.08	38.00	153.14	9522.23	517.09	793.52	0.78
Cascioarele	1373	21.23	0.00	15.58	0.50	0.00	22.64	0.96	0.00	21.40	0.54	0.00	30.06	0.10	0.00	20.28	0.24	0.00	24.26	1.30	0.00	35.10	0.46	0.00	25.76	0.30	0.00	24.90	0.92	0.00	31.30	1.78	0.00	24.76	1.24	0.00	26.16	0.40	0.00	302.20	8.74	25.18	0.60
Chirnogi	6700	103.61	10.74	69.96	1.28	6.68	64.06	0.80	6.90	92.70	0.82	9.38	91.22	1.23	11.34	119.36	1.58	6.82	110.22	1.43	9.02	137.26	4.00	8.26	93.76	10.90	5.62	86.06	13.64	15.06	118.40	17.88	7.80	92.18	11.48	9.08	69.20	5.64	106.70	1144.38	70.68	95.37	0.47
Chiselet	2907	44.95	0.38	22.10	0.48	0.14	35.16	0.28	0.08	49.94	0.22	0.14	39.14	0.56	0.28	45.50	0.86	0.26	42.34	0.74	0.26	49.32	1.42	0.26	57.00	0.40	0.12	45.92	1.50	0.00	44.86	0.56	0.08	50.50	1.16	0.00	32.58	1.36	2.00	514.36	9.54	42.86	0.48
Crivat	1814	28.05	0.00	17.70	1.22	0.08	18.36	1.98	0.34	20.52	2.02	0.38	21.38	1.90	0.34	25.46	2.84	0.22	21.80	3.36	0.14	26.22	4.46	0.12	18.80	4.34	0.16	18.18	4.50	0.36	21.76	4.38	0.26	17.86	3.38	0.12	16.94	4.52	2.52	244.98	38.90	20.42	0.37
Curcani	4600	71.13	2.84	59.94	0.34	19.84	72.92	0.82	10.92	106.82	0.66	13.30	101.84	0.50	6.64	112.46	0.00	7.76	110.20	0.40	5.28	157.34	0.12	4.68	119.38	0.32	9.38	125.40	0.62	13.02	117.58	0.46	19.12	95.02	0.40	8.08	103.44	0.44	120.86	1282.34	5.08	106.86	0.76
Frumusani	5062	78.28	5.02	94.26	0.26	5.04	124.82	0.46	5.46	149.22	0.28	5.32	165.76	0.58	5.40	157.36	0.30	5.40	161.26	0.48	6.00	210.42	1.34	4.20	169.58	1.10	5.08	173.84	1.32	6.00	183.80	2.94	5.40	148.72	4.00	7.30	155.18	4.22	65.62	1894.22	17.28	157.85	1.02
Fundeni	4862	75.18	6.04	106.42	0.32	5.88	134.92	0.62	9.30	174.18	0.64	8.50	139.52	0.78	11.42	187.72	0.86	8.70	152.18	0.68	8.26	159.94	2.90	8.70	196.24	2.72	10.18	151.70	3.54	8.48	172.18	3.70	8.34	168.60	3.34	8.44	112.80	2.86	102.24	1856.40	22.96	154.70	1.04
Galbinasi	3600	55.67	0.22	38.42	0.64	1.16	70.48	0.10	1.24	77.10	0.00	1.38	83.32	0.76	1.78	79.74	0.48	3.68	83.30	0.26	2.44	116.70	0.32	2.43	87.22	3.56	3.96	91.76	1.70	2.70	103.58	2.10	2.18	66.44	1.30	6.28	56.40	0.60	29.45	954.46	11.82	79.54	0.72
Luica	1465	22.65	0.56	15.58	0.00	0.68	26.88	0.26	0.58	35.26	0.62	0.30	28.90	0.22	0.76	38.34	0.34	0.88	32.70	0.38	0.88	36.38	0.30	1.22	41.48	0.00	0.88	31.02	1.44	1.00	29.44	1.64	0.92	42.78	1.14	0.46	26.48	0.68	9.12	385.24	7.02	32.10	0.72
Mitreni	4150	64.17	0.00	51.58	0.34	0.00	62.10	0.24	0.00	79.16	0.20	0.20	71.34	0.20	0.68	89.16	0.14	1.26	75.60	0.72	1.18	103.54	0.92	0.92	92.88	0.78	0.68	90.00	0.92	0.34	104.56	0.92	0.50	85.54	1.00	0.80	64.30	0.40	6.56	969.76	6.78	80.81	0.64
Nana	2105	32.55	0.92	12.14	0.00	0.42	18.06	0.00	0.34	24.30	0.00	0.08	25.60	0.06	0.00	25.50	0.00	0.90	23.74	0.00	0.72	37.04	0.00	0.30	28.98	0.00	0.38	30.70	0.00	0.30	24.60	0.00	0.16	22.39	0.00	0.26	27.68	0.00	4.78	300.73	0.07	25.06	0.39
Plataresti	3519	54.42	6.14	42.14	0.00	9.10	60.00	0.30	9.68	96.44	0.62	8.66	98.84	0.63	10.30	96.52	0.84	7.84	100.46	0.96	5.58	138.34	1.06	6.00	106.04	0.60	5.52	114.90	1.08	7.32	113.96	1.46	4.46	96.00	1.20	5.24	98.70	0.32	85.84	1162.34	9.07	96.86	0.90
Radovanu	3663	56.64	1.22	21.28	2.16	1.98	42.44	3.24	2.14	58.00	3.40	1.34	59.58	3.40	1.52	67.94	4.84	1.52	60.08	4.26	1.00	66.88	3.40	1.15	79.10	3.88	0.92	55.50	2.96	1.22	63.34	3.94	2.54	66.84	4.18	6.66	37.42	2.42	23.21	678.40	42.08	56.53	0.51
Soldanu	3209	49.62	0.86	34.38	1.46	0.90	48.46	0.56	0.74	66.68	1.32	1.06	68.50	1.00	1.10	81.00	1.08	0.80	77.40	1.59	1.40	97.52	5.44	1.14	73.24	9.88	0.68	66.86	9.18	1.42	91.18	7.62	1.36	65.36	6.58	0.82	66.66	5.36	12.28	837.24	51.07	69.77	0.71
Spantov	4489	69.42	0.94	49.02	0.28	0.70	47.86	0.44	0.46	50.54	0.28	0.54	53.64	0.96	0.80	73.42	1.04	0.88	66.94	0.90	0.74	82.10	0.30	0.92	81.34	0.48	0.58	69.60	2.14	0.22	91.74	1.02	0.12	66.96	1.60	0.24	49.74	0.82	7.14	782.90	10.26	65.24	0.48
Ulmeni	4832	74.72	1.68	41.34	0.90	2.06	47.86	0.32	0.98	60.14	0.74	2.74	76.50	0.70	0.94	72.68	1.12	1.92	74.54	2.76	2.60	107.58	3.78	1.62	80.96	2.92	1.02	89.06	2.80	1.02	90.16	2.78	1.32	67.50	2.28	1.44	56.56	2.00	19.34	864.88	23.10	72.07	0.49
Vasilati	3951	61.10	12.06	59.98	0.14	10.20	93.90	0.88	11.32	101.82	0.92	7.10	97.16	0.02	12.46	128.90	1.52	10.88	109.48	6.26	11.34	148.28	4.30	9.88	123.28	7.76	10.34	109.34	5.40	10.56	145.72	7.58	9.12	106.48	3.18	8.14	91.36	2.82	123.40	1315.70	40.78	109.64	0.91
TOTAL RURAL	62301	963.39	49.62	751.82	10.32	64.86	990.92	12.26	60.48	1264.22	13.28	60.42	1252.30	13.60	65.76	1421.34	18.08	59.72	1326.50	26.48	56.84	1709.96	34.52	51.80	1475.04	49.94	55.50	69.02	1548.16	60.76	63.68	1283.93	47.46	63.36	1091.60	34.86	721.06	15490.53	375.22	1290.88	0.68		
TOTAL ZONA 2	95792	1645.74	146.96	1216.10	14.32	199.66	1417.24	29.52	200.64	2056.64	34.86	186.32	2012.72	45.02	208.38	2285.10	57.96	175.38	2214.92	89.53	197.08	2805.06	114.56	163.62	2486.80	126.92	185.02	2220.42	107.28	213.14	2452.26	111.46	193.38	2099.82	88.02	182.62	1745.68	72.86	2252.20	25012.76	892.31	2084.40	0.71

RECICLABIL	IAN 2019		FEBR 2019		MAR 2019		APR 2019		MAI 2019		IUNIE 2019		IULIE 2019		AUGUST 2019		SEPT 2019		OCT 2019		NOV 2019		DEC 2019		TOTAL	
	AE/IP	POP	AE/IP	POP	AE/IP	POP	AE/IP	POP	AE/IP	POP	AE/IP	POP	AE/IP	POP	AE/IP	POP	AE/IP	POP	AE/IP	POP	AE/IP	POP	AE/IP	POP	AE/IP	POP
	2.86	14.32	1.3	29.52	1.54	34.86	3.02	45.02	1.22	57.96	2.04	89.53	1.26	114.56	2.04	126.92	2.38	107.28	3.							

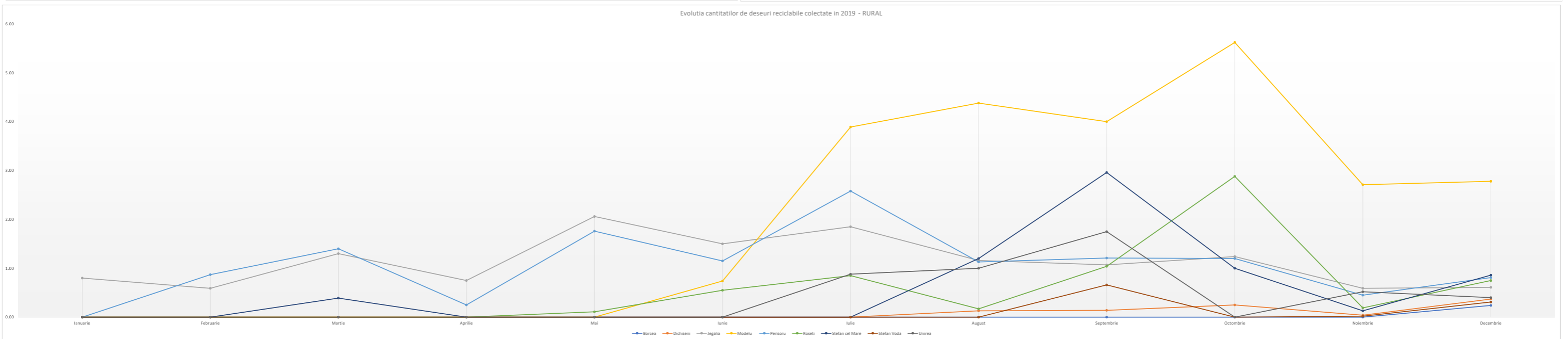
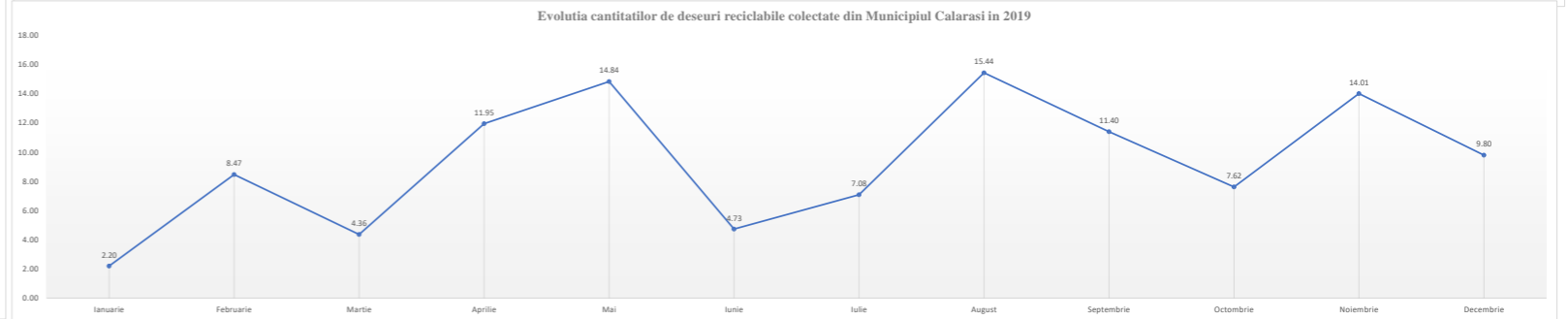
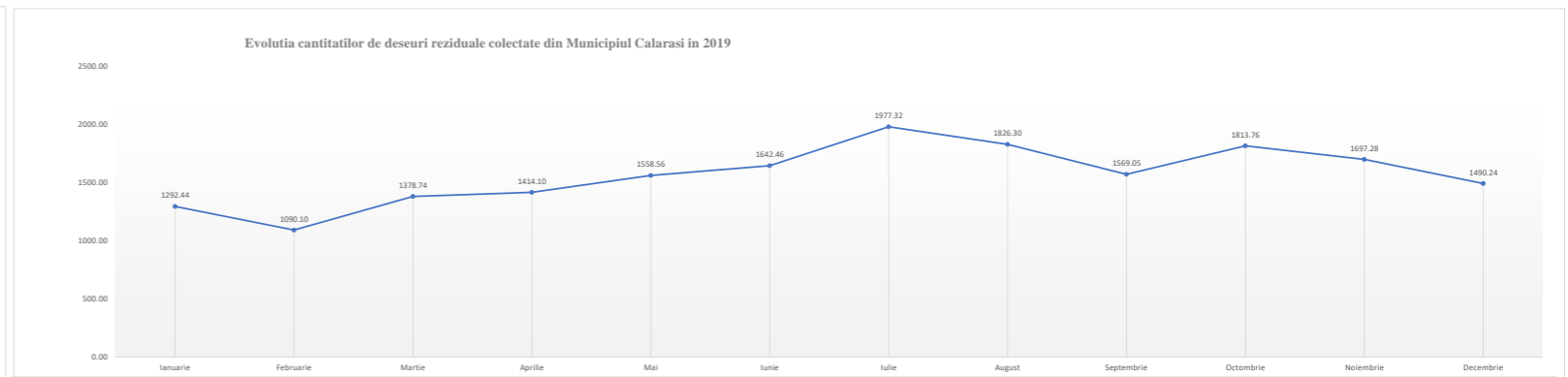
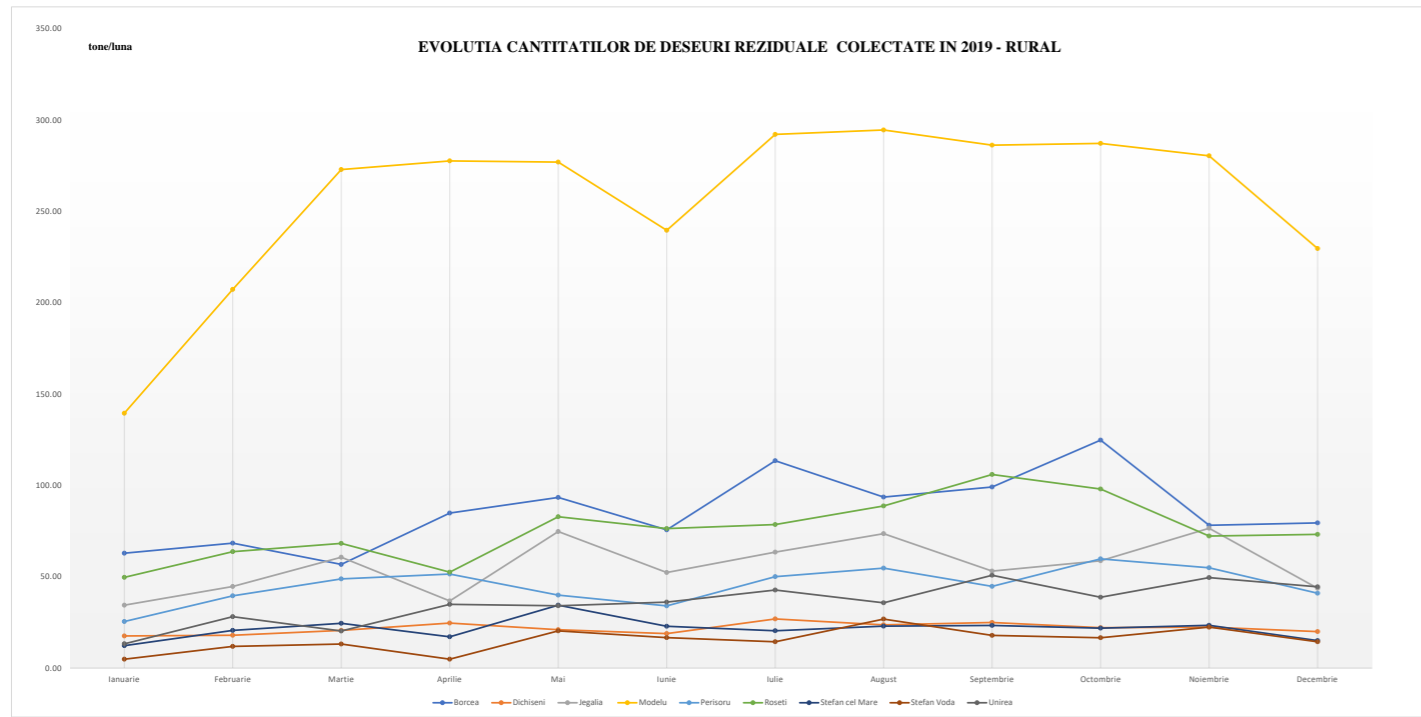
CANTITATI COLECTATE ZONA 3 CALARASI (TONE)

LOCALITATE	POPULATIE UAT	Cant.med Contract	Ianuarie 2019			Februarie 2019			Martie 2019			Aprilie 2019			Mai 2019			Iunie 2019			Iulie 2019			August 2019			Septembrie 2019			Octombrie 2019			Noiembrie 2019			Decembrie 2019			TOTAL 2019			MEDIE LUNARA	Cant gen. pe zi/pers
			AE/IP	POP	REC	AE/IP	POP	REC	AE/IP	POP	REC	AE/IP	POP	REC	AE/IP	POP	REC	AE/IP	POP	REC	AE/IP	POP	REC	AE/IP	POP	REC	AE/IP	POP	REC	AE/IP	POP	REC	AE/IP	POP	REC	AE/IP	POP	REC					
Mun. Calarasi	65181	1483.06	465.67	1292.44	2.20	453.08	1090.10	8.47	509.22	1378.74	4.36	430.64	1414.10	11.95	698.18	1558.56	14.84	441.77	1642.46	4.73	656.98	1977.32	7.08	468.16	1826.30	15.44	434.17	1569.05	11.40	312.48	1813.76	7.62	349.58	1697.28	14.01	430.26	1490.24	9.80	5650.19	18750.35	111.90	1562.53	0.79
Borcea	7600	97.36	1.77	62.85	0.00	2.42	68.36	0.00	2.86	56.72	0.00	2.10	84.81	0.00	2.20	93.41	0.00	2.58	75.61	0.00	3.73	113.47	0.00	2.94	93.56	0.00	3.43	99.11	0.00	4.17	124.77	0.00	9.91	78.13	0.00	8.70	79.44	0.24	46.81	1030.24	0.24	85.85	0.37
Dichiseni	1661	21.28	0.78	17.55	0.00	0.53	17.93	0.00	0.63	20.59	0.00	0.47	24.63	0.00	0.47	21.00	0.00	0.96	18.86	0.00	0.78	26.86	0.00	0.48	23.60	0.13	0.85	24.93	0.14	0.56	22.42	0.25	0.64	22.42	0.04	0.91	19.93	0.37	8.06	260.40	0.93	21.70	0.43
Jegalia	3907	50.05	0.74	34.40	0.80	0.56	44.61	0.59	0.65	60.67	1.30	0.90	36.74	0.75	1.70	74.70	2.06	1.04	52.30	1.50	1.02	63.41	1.85	0.98	73.54	1.16	1.36	53.06	1.07	1.29	58.71	1.24	1.22	76.51	0.59	0.83	43.63	0.61	12.29	672.28	13.52	56.02	0.47
Modelu	9000	115.29	3.60	139.51	0.00	3.95	207.32	0.00	3.92	272.90	0.00	3.70	277.66	0.00	4.20	276.96	0.00	4.96	239.62	0.74	4.96	292.14	3.89	6.30	294.57	4.38	5.88	286.26	4.00	5.10	287.26	5.62	5.03	280.41	2.71	4.34	229.68	2.78	55.94	3084.29	24.12	257.02	0.94
Perisoru	5326	68.23	2.97	25.45	0.00	4.38	39.52	0.87	2.81	48.80	1.40	4.20	51.45	0.25	4.74	39.88	1.76	5.90	34.02	1.15	3.64	49.99	2.58	4.37	54.70	1.13	4.90	44.73	1.21	3.17	59.75	1.20	5.17	54.90	0.45	3.40	40.95	0.81	49.65	544.14	12.81	45.35	0.28
Roseti	6100	78.14	0.61	49.63	0.00	0.84	63.69	0.00	0.43	68.23	0.00	0.53	52.50	0.00	1.23	82.81	0.11	1.11	76.34	0.55	0.88	78.51	0.85	1.38	88.69	0.17	0.68	105.94	1.04	1.17	97.98	2.88	0.82	72.26	0.19	0.54	73.16	0.75	10.22	909.74	6.54	75.81	0.41
Stefan cel Mare	2639	33.81	0.26	12.24	0.00	0.32	20.59	0.00	0.71	24.50	0.39	0.55	17.10	0.00	0.61	34.40	0.00	0.45	22.85	0.00	0.38	20.41	0.00	0.61	22.89	1.20	0.55	23.33	2.96	0.99	21.84	1.00	0.54	23.40	0.13	0.74	15.02	0.86	6.71	258.57	6.54	21.55	0.27
Stefan Voda	2436	31.21	0.05	4.81	0.00	0.23	11.84	0.00	0.15	13.10	0.00	0.00	4.85	0.00	0.31	20.34	0.00	0.07	16.60	0.00	0.21	14.34	0.00	0.28	26.78	0.00	0.22	17.86	0.66	0.38	16.58	0.00	0.24	22.42	0.02	0.34	14.39	0.31	2.48	183.91	0.99	15.33	0.21
Unirea	2682	34.36	0.25	13.23	0.00	0.29	28.13	0.00	0.77	20.27	0.00	0.30	34.85	0.00	0.31	34.05	0.00	0.27	36.06	0.00	0.45	42.71	0.88	0.57	35.66	1.00	0.61	50.77	1.75	0.46	38.76	0.00	0.36	49.52	0.52	0.48	44.42	0.40	11.12	428.43	4.55	35.70	0.44
TOTAL RURAL	41351	529.71	11.03	359.67	0.80	13.52	501.99	1.46	18.93	585.78	3.09	12.75	584.59	1.00	15.77	677.55	3.93	17.34	572.26	3.94	16.05	701.84	10.05	17.91	713.99	9.17	18.48	705.99	12.83	17.29	727.75	12.19	23.93	679.97	4.65	20.28	560.62	7.13	203.28	7372.00	70.24	614.33	0.49
TOTAL ZONA 3	106532	2012.77	476.70	1652.11	3.00	466.60	1592.09	9.93	528.15	1964.52	7.45	443.39	1998.69	12.95	713.95	2236.11	18.77	459.11	2214.72	8.67	673.03	2679.16	17.13	486.07	2540.29	24.61	452.65	2275.04	24.23	329.77	2541.51	19.81	373.51	2377.25	18.66	450.54	2050.86	16.93	5853.47	26122.35	182.14	2176.86	0.67

RECICLABIL	IAN 2019		FEBR 2019		MAR 2019		APR 2019		MAI 2019		IUNIE 2019		IULIE 2019		AUGUST 2019		SEPT 2019		OCT 2019		NOV 2019		DEC 2019		TOTAL	
	AE/IP	POP	AE/IP	POP	AE/IP	POP	AE/IP	POP	AE/IP	POP	AE/IP	POP	AE/IP	POP	AE/IP	POP	AE/IP	POP	AE/IP	POP	AE/IP	POP	AE/IP	POP	AE/IP	POP
	8.15	3.00	0.62	9.93	11.79	7.45	7.10	12.95	4.25	18.77	6.03	8.67	6.67	17.13	5.02	24.61	6.10	24.23	12.52	19.81	8.76	18.66	2.68	16.93	79.69	182.14

Cantitatea medie generata (kg/zi)	Urban	Rural	Zona
		0.79	0.49

LUNA BIODEGRADABIL	IAN	FEB	MAR	APR	MAI	IUNIE	IULIE	AUG	SEPT	OCT	NOV	DEC	TOTAL
	STRADAL	76.2	73.7	85.28	145.88	86.82	59.04	78.24	87.94	71.5	82.4	109.24	69.88

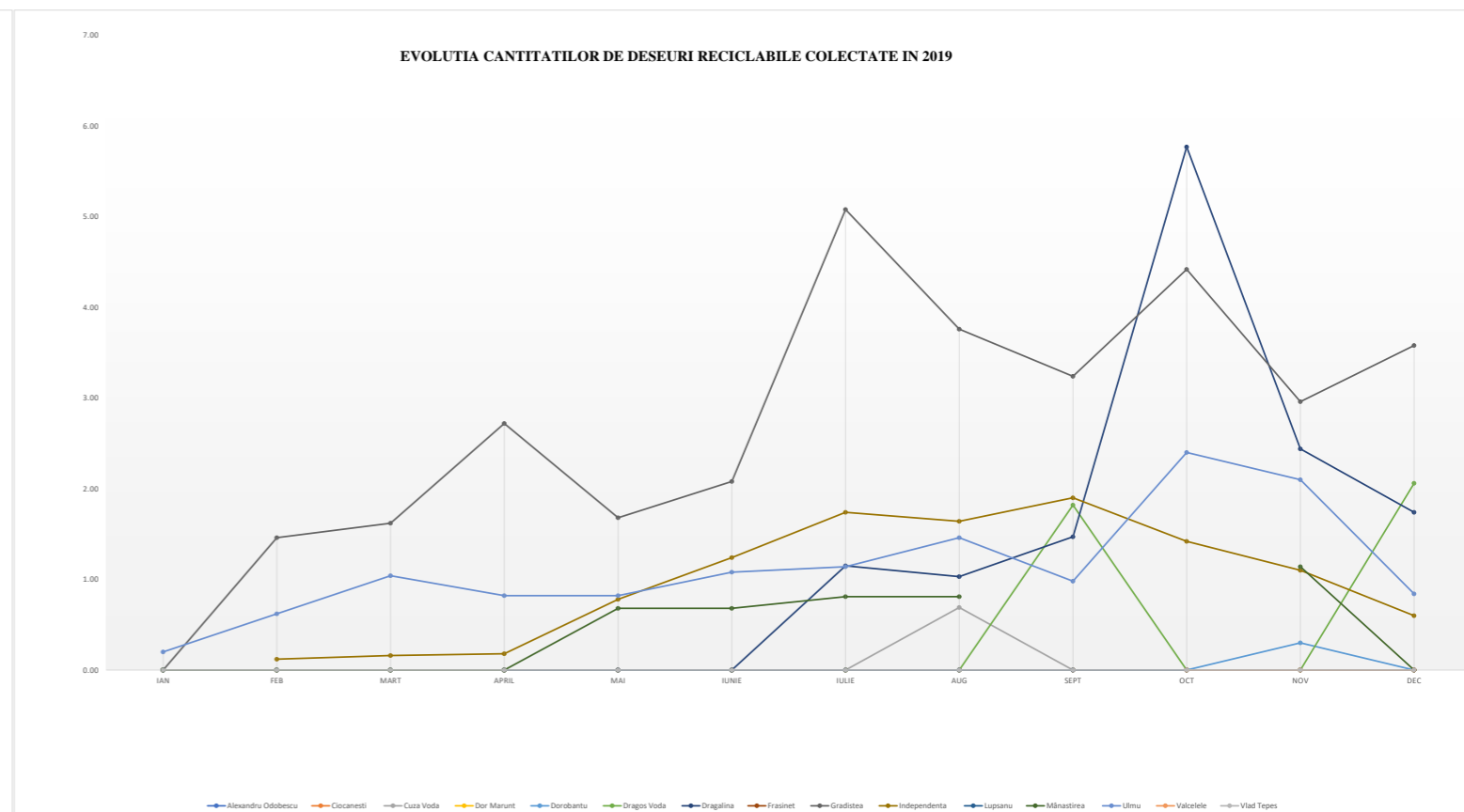
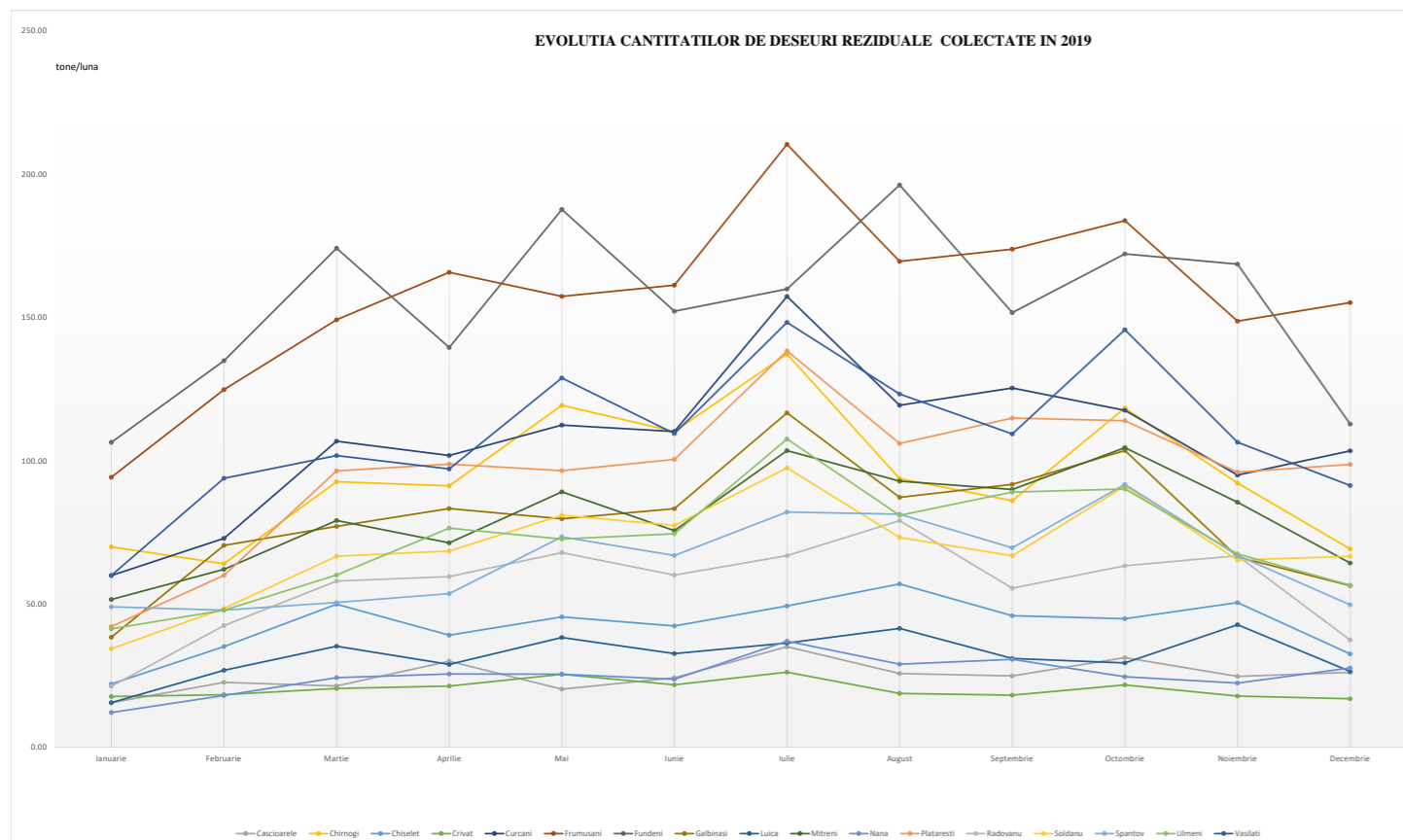


CANTITATI COLECTATE ZONA 4 CIOCANESTI (TONE)

LOCALITATE	POPULATIE UAT	Cant.med Contract	Ianuarie 2019			Februarie 2019			Martie 2019			Aprilie 2019			Mai 2019			Iunie 2019			Iulie 2019			August 2019			Septembrie 2019			Octombrie 2019			Noiembrie 2019			Decembrie 2019			TOTAL 2019			MEDIE LUNARA	Cant gen. pe zi/pers		
			AE/IP	POP	REC	AE/IP	POP	REC	AE/IP	POP	REC	AE/IP	POP	REC	AE/IP	POP	REC	AE/IP	POP	REC	AE/IP	POP	REC	AE/IP	POP	REC	AE/IP	POP	REC	AE/IP	POP	REC	AE/IP	POP	REC	AE/IP	POP	REC							
			Alexandru Odobescu	2180	27.93	0.00	0.00	0.00	0.00	0.00	0.00	0.00	0.00	0.00	0.00	0.00	0.00	2.36	15.02	0.00	2.14	16.10	0.00	2.40	15.14	0.00	2.88	21.56	0.00	2.40	17.46	0.00	1.72	16.64	0.00	2.40	20.68	0.00	1.96	13.04	0.00			18.26	101.92
Ciocanesti	3215	41.18	8.90	29.52	0.00	6.30	28.78	0.00	6.68	32.30	0.00	6.10	34.60	0.00	9.10	35.84	0.00	7.36	26.58	0.00	8.94	33.90	0.00	7.94	19.88	0.00	7.70	21.16	0.00	9.00	28.90	0.00	7.28	25.56	0.00	9.08	20.94	0.00	94.38	291.46	0.00	24.29	0.25		
Cuza Voda	3230	41.38	0.45	28.32	0.00	0.21	59.39	0.00	0.39	40.17	0.00	0.16	36.77	0.00	0.70	47.42	0.00	0.26	39.99	0.00	0.62	43.86	0.00	8.62	55.59	0.69	0.70	42.44	0.00	0.16	40.82	0.00	0.58	41.46	0.00	7.28	37.68	0.00	20.13	434.77	0.69	36.23	0.37		
Dor Marunt	6821	87.38	1.17	36.55	0.00	1.04	26.74	0.00	1.09	29.20	0.00	1.84	28.06	0.00	2.22	37.38	0.00	1.38	35.30	0.00	0.95	33.55	0.00	2.51	44.57	0.00	2.18	32.26	0.00	2.81	36.69	0.00	1.47	31.72	0.00	1.51	26.99	0.00	20.17	340.30	0.00	28.36	0.14		
Dorobantu	2758	35.33	0.08	19.74	0.00	0.08	29.12	0.00	0.00	32.82	0.00	0.00	36.58	0.00	0.00	39.74	0.00	0.16	37.54	0.00	0.50	50.60	0.00	0.22	36.00	0.00	0.00	44.44	0.00	1.36	37.18	0.00	0.96	29.08	0.30	1.02	21.42	0.00	4.38	364.06	0.30	30.34	0.36		
Dragos Voda	2030	26.00	0.11	19.11	0.00	0.07	23.01	0.00	0.17	43.29	0.00	0.07	26.83	0.00	0.70	33.36	0.00	0.21	31.57	0.00	0.30	34.76	0.00	0.40	44.10	0.00	0.48	29.87	1.82	0.46	32.10	0.00	0.46	28.20	0.00	0.41	25.95	2.06	3.84	318.00	1.82	26.50	0.43		
Dragalina	6910	88.52	2.68	56.73	0.00	1.58	92.74	0.00	0.73	104.65	0.00	2.94	106.26	0.00	3.07	149.35	0.00	2.00	80.52	0.00	1.42	102.80	1.15	2.10	74.88	1.03	2.84	84.14	1.47	7.10	117.71	5.77	2.19	106.72	2.44	2.41	65.65	1.74	31.06	972.22	11.86	81.02	0.38		
Frasinet	1000	12.81	0.00	12.16	0.00	0.00	14.20	0.00	0.00	16.18	0.00	0.26	21.68	0.00	0.28	17.68	0.00	0.08	20.18	0.00	0.34	26.26	0.00	0.42	19.76	0.00	0.46	18.82	0.00	0.84	20.44	0.00	0.46	13.16	0.00	0.58	16.10	0.00	3.72	187.36	0.00	15.61	0.51		
Gradistea	4780	61.23	1.21	29.24	0.00	2.42	24.98	1.46	3.32	23.70	1.62	2.86	14.80	2.72	3.06	17.18	1.68	2.38	13.48	2.08	3.00	13.82	5.08	2.14	16.40	3.76	2.84	11.70	3.24	4.32	10.97	4.42	2.44	10.36	2.96	3.06	8.64	3.58	33.05	179.23	29.02	14.94	0.10		
Independenta	2780	0.00	0.00	0.00	0.00	0.00	21.80	0.12	0.00	21.32	0.16	0.34	22.78	0.18	0.32	13.84	0.78	0.24	11.06	1.24	1.14	16.58	1.74	1.00	12.32	1.64	1.10	15.36	1.90	2.78	9.54	1.42	1.18	9.72	1.10	2.00	11.70	0.60	10.10	145.70	10.28	13.25	0.16		
Lupsanu	2400	30.74	1.53	21.70	0.00	0.07	25.41	0.00	0.09	28.83	0.00	0.39	37.21	0.00	0.33	37.41	0.00	0.14	31.62	0.00	0.65	34.95	0.00	1.33	33.19	0.00	0.74	32.49	0.00	1.26	48.82	0.00	0.24	36.48	0.00	0.13	28.43	0.00	6.90	331.63	0.00	27.64	0.38		
Mănastirea	4465	57.20	0.00	74.20	0.00	0.00	56.68	0.00	0.00	36.80	0.00	0.00	53.38	0.00	0.00	64.32	0.68	0.00	34.38	0.68	0.00	15.48	0.81	0.00	27.48	0.81	0.00	74.04	0.00	0.00	72.82	0.00	0.00	5.09	1.14	0.00	65.00	0.00	0.00	510.72	4.12	42.56	0.31		
Ulm	1351	17.31	0.58	13.14	0.20	0.24	16.88	0.62	0.50	20.80	1.04	0.34	19.54	0.82	0.46	25.00	0.82	0.38	24.46	1.08	0.38	26.82	1.14	0.42	29.22	1.46	0.22	25.70	0.98	0.26	31.08	2.40	0.26	22.32	2.10	0.22	15.54	0.84	4.26	234.74	12.66	19.56	0.47		
Valcelele	1529	19.59	0.00	0.00	0.00	0.00	0.00	0.00	0.00	0.00	0.00	0.00	0.00	0.00	0.00	0.00	0.00	0.00	0.00	0.00	0.00	0.00	0.00	0.00	0.00	0.00	0.00	0.00	0.00	0.00	0.00	0.00	0.00	0.00	0.00	4.80	0.00	0.00	7.78	0.00	0.00	4.80	0.00	2.59	0.06
Vlad Tepes	1459	18.69	0.00	10.90	0.00	0.00	20.52	0.00	0.00	27.72	0.00	0.00	22.76	0.00	0.00	29.94	0.00	0.00	26.88	0.00	0.00	28.80	0.00	0.00	35.38	0.00	0.00	26.88	0.00	0.00	26.56	0.00	0.00	29.80	0.00	0.00	20.96	0.00	0.00	256.34	0.00	21.36	0.48		
TOTAL ZONA	46908	565.28	16.71	351.31	0.20	12.01	440.25	2.20	12.97	457.78	2.82	15.30	461.25	3.72	22.60	563.48	3.96	16.73	429.66	5.08	20.64	477.32	9.92	29.98	470.33	9.39	21.66	476.76	9.41	32.07	538.05	14.01	19.92	415.03	10.04	29.66	382.84	8.82	250.25	4676.23	70.75	389.69	0.27		

RECICLABIL	IAN 2019		FEBR 2019		MAR 2019		APR 2019		MAI 2019		IUNIE 2019		IULIE 2019		AUGUST 2019		SEPT 2019		OCT 2019		NOV 2019		DEC 2019		TOTAL	
	AE/IP	POP	AE/IP	POP	AE/IP	POP	AE/IP	POP	AE/IP	POP	AE/IP	POP	AE/IP	POP	AE/IP	POP	AE/IP	POP	AE/IP	POP	AE/IP	POP	AE/IP	POP	AE/IP	POP
		0.18	0.20	0.06	2.20	0.15	2.82	0.08	3.72	0.56	3.96	0.72	5.08	0.68	9.92	1.57	9.39	0.97	9.41	0.37	14.01	0.77	10.04	0.74	8.82	6.85

Canitatea medie generata (kg/zi)	Rural
	0.27



CANTITATI TRANSPORTATE LA CMID CIOCANESTI (TONE)

Tip de deseu	Ianuarie 2019		Februarie 2019		Martie 2019		Aprilie 2019		Mai 2019		Iunie 2019		Iulie 2019		August 2019		Septembrie 2019		Octombrie 2019		Noiembrie 2019		Decembrie 2019		TOTAL		TOTAL 2019	Medie lunara	
	AE/IP	POP	AE/IP	POP	AE/IP	POP	AE/IP	POP	AE/IP	POP	AE/IP	POP	AE/IP	POP	AE/IP	POP	AE/IP	POP	AE/IP	POP	AE/IP	POP	AE/IP	POP	AE/IP	POP			
Menajer	687.81	3602.21	722.74	3964.67	789.54	5073.53	692.02	5027.58	1000.09	5778.83	695.89	5499.39	954.71	6727.50	732.11	6213.05	719.93	5649.34	637.32	6255.03	640.34	5467.04	711.85	5377.04	8984.35	64635.21	73619.56	748.696	5386.268
Reciclabil	11.31	18.29	2.03	43.83	13.72	49.05	10.95	67.48	7.56	85.08	9.38	107.13	10.54	151.40	10.33	171.42	10.39	148.56	19.18	154.53	12.11	126.98	7.28	109.57	124.784	1233.32	1358.104	10.3987	102.7767
Refuz Sortare	0		0		0		23.48		32.64		46.86		68.52		49.98		60.36		58.82		114.3		438.1		893.06		893.06	74.42	
Biodegradabil	0		0		2.46		0.64		14.62		2.26		3.4		2.18		2.5		5.7		7.2		1.7		42.66		85.32	7.11	
Refuz Bio													491.1																
Stradal	143.62		156.76		285.16		239.30		207.60		152.24		187.28		87.94		71.50		82.40		109.24		69.88		1792.92		1792.92	149.41	
Demolari	9.6		40.9		10.9		12.2		13.52		12.76		22.44		26.42		19.88		14.42		9.36		21.36		213.76		213.76	17.81	

Total deseurile depozitate in groapa (tone)	(menajer, refuz sortare, refuz biodegradabil, stradal)
	76796.64